

G O D M O R N I N G !

Thursday, February 24, 2011

"Culture is Us!"



Ted Soliday
Executive Director

Naples Airport Authority

Ted Soliday's background in aviation spans more than forty (40) years. His experience ranges in nearly all aspects of aviation as a Pilot, Air Traffic Controller, Educator, Planner and Manager. His education includes a Bachelor of Science degree in Aviation Management from Auburn University and graduate work at both the University of Bridgeport and at Oregon State University in business administration and finance.

As the Executive Director of the City of Naples Airport Authority, The Naples Municipal Airport was the recipient of the 1998 Southern Region Air Carrier Safety Award, the highest award an air carrier airport can receive and was a recipient of the 2000 Project of the Year Award. The FDOT Tallahassee Aviation Office awarded the "Florida Aviation Professional of the Year" to Mr. Soliday in 2002. The City of Naples Airport Authority was recognized by the Airports Council International (ACI-NA) with its Environmental Achievement Award for the year 2003. In 2007, he was chosen to Chair the Transportation Research Board Panel reviewing "Potential Impacts of Very Light Jets on U.S. Airports" and was selected to serve as ACI-NA Chairman on the Small Airports Committee for 2008-09.

Mr. Soliday was a Captain, Pilot and Air Traffic Controller for the United States Marine Corps and is a disabled veteran from the Vietnam conflict. He was decorated nine times for his service in combat.



Upcoming Rotary Events

March 19th - Winter Pigeon Party
at the home of Earl & Thelma Hodges

March 26th - "Grapes & Apes"
Naples Zoo
Sponsored by Rotary Club of Naples

June 9-12 - District Conference
Marina Village Resort in Cape Coral

February is World Understanding Month

Attendance Last Meeting

Members Present:	89	82.30%		
Makeups:	4			
Visiting Rotarians:	5		Winter Pigeons:	6
Guests of Members:	5		Student Guests:	3

Did you make up?



Guest Speaker

Next Week: Maud Dahm, "Hidden Child"; Holocaust Survivor

Last Meeting: Anne Frazier, Drug Free Collier



Birthdays & Anniversaries

Member	Birthday	Age
Carla Belanger	Mar. 01	40
Dick Sullivan	Mar. 01	80
George Zurlo	Feb. 28	72

Member	Wedding Anv.	Years
John Brooks	Feb. 28	13

Member	Club Anv.	Years
Guy Carlton	Feb. 25	29
Gene Turner	Mar. 01	33
Larry Weidner	Feb. 25	29



Distinguished Rotarians

Rotarian	Honored
Doug Baird	Sept. 30, 2010
Heather Milner	Apr. 23, 2009
Keith Geiman	Jan. 8, 2009
Lois Kluberdanz	Jun. 5, 2008



Rotarian of the Year 2011

John Clapper



**100% Paul Harris Fellows
or Sustaining Members**



Mercedes-Benz Brazil contributes to Rotarian relief efforts in Chile

The initiative of a Rotaractor and the determination of a past Rotary International director helped secure a donation of US\$568,000 from Mercedes-Benz Brazil to support Rotarian disaster recovery efforts in Chile.



Rotaractor Ana Carolina Silvestre da Costa examines one of the ambulances purchased with the Mercedes-Benz Brazil donation.

Ana Carolina Silvestre da Costa, a Rotaractor and former Rotary Youth Exchange student, has been working in the internal communications department for Mercedes-Benz Brazil for three years. Because of her community service work through Rotaract, Costa was put in charge of overseeing the company's charitable giving.

When Costa's superiors asked her for ideas as to where the company could make a donation for earthquake relief, she reached out to Roberto Barroso Filho, a past district governor, who encouraged her to suggest the Brazilian Association of The Rotary Foundation.

"When I took it to the upper level, everyone had already heard of Rotary and knew its reputation," Costa says. "No one had any hesitation."

José Alfredo Pretoni, a past RI director and past Foundation trustee, met with Mercedes-Benz representatives to discuss the terms of the donation and served as the liaison to Rotary leadership and the Brazilian Association of The Rotary Foundation.

Rotary Chile Recovery Fund

The Mercedes-Benz donation more than doubled the amount available to Rotary clubs through the Foundation's Rotary Chile Recovery Fund, set up after a powerful earthquake in February 2010 devastated parts of Chile. The quake and a subsequent tsunami destroyed homes, hospitals, and schools, displacing families, limiting health care, and blocking children's access to the schools that remained open.

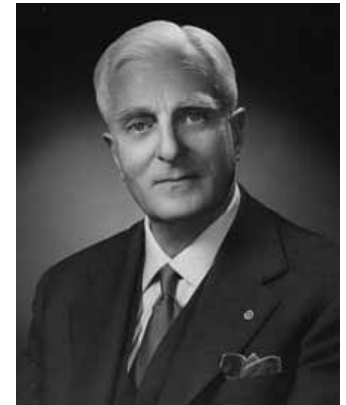
(con't at right)

Quote of the Month: Understand and be understood

Each month, we highlight a piece of Rotary history and share an inspirational quote from past Rotary leaders. February's quote:

"The spirit of Rotary is not exclusive; it expands. It is not local, it is universal. And so the wish to understand and to be understood, the wish to see the virtues rather than the faults in others, the longing to find out what we have in common rather than what divides us — these can be widely shared."

— Gian Paolo Lang, 1956-57 RI president, address to 1957 convention



Gian Paolo Lang, 1956-57 RI president

Part of the Mercedes-Benz donation has been used to purchase three ambulances to help transfer patients in the communities of Constitución, Talco, and Talcahuano to regional hospitals, and three minivans to shuttle children to school. The remainder is available to Rotary clubs and districts through Matching Grants for recovery projects in Chile.

"With this humanitarian help, we hope to mitigate the difficulties faced by the Chilean population, especially in this important moment of reconstruction and return to normal daily routine," says Jurgen Ziegler, president of Mercedes-Benz Brazil.

Although the Foundation is no longer accepting contributions to the Rotary Chile Recovery Fund, a significant portion of the \$1 million collected by the fund remains to be awarded. The fund is administered through Matching Grants and can be used for projects providing humanitarian assistance and supporting disaster recovery in Chile. The fund acts as the Foundation's match for disaster recovery projects taking place within the country. A club or district in the affected regions of Chile may partner with a club or district outside of Chile and apply for a Matching Grant.



Friend us on Facebook